

# Study Spaces Guide



Welcome to your ultimate **Study Spaces Guide!** Browse through this handy flyer for everything you need to discover your ideal study spot on campus.

Scan the QR code to:



Check out our awesome social reels showcasing our amazing spaces



Download the Uni-verse app, select '**Study Spaces**' to unlock your perfect study spot anytime.



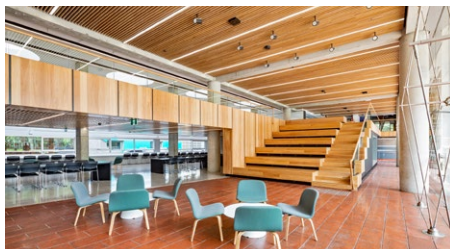
Find the exact location of your ideal study spot using our handy map



Ready to ace your study game? Explore what makes each space unique or visit: [unsw.to/studyspaces](https://unsw.to/studyspaces)



C20 Morven Brown Study Space



H13 Anita B Lawrence Gallery Study Space



UNSW  
SYDNEY

STUDY  
SPACE

| No.                 | Name                      | Capacity | Features |
|---------------------|---------------------------|----------|----------|
| <b>Upper Campus</b> |                           |          |          |
| C20                 | Morven Brown              | 134      |          |
| C27                 | Wallace Wurth             | 196      |          |
| E26                 | Biological Sciences South | 80       |          |
| F23                 | Mathews                   | 50       |          |
| F21                 | Main Library              | 2800     |          |
| E19                 | Patricia O'Shane          | 89       |          |
| <b>Mid Campus</b>   |                           |          |          |
| G17                 | Electrical Engineering    | 216      |          |
| G14                 | Webster Courtyard         | 170      |          |
| H13                 | Anita B. Lawrence Gallery | 220      |          |
| E15                 | Quadrangle                | 272      |          |
| E12                 | UNSW Business School      | 641      |          |
| D16                 | Goldstein                 | 30       |          |
| B16                 | Colombo                   | 109      |          |
| G14                 | Webster Terrace           | 32       |          |

| No.                 | Name                    | Capacity | Features |
|---------------------|-------------------------|----------|----------|
| <b>Lower Campus</b> |                         |          |          |
| F8                  | Law Library             | 805      |          |
| F8                  | Law Building            | 183      |          |
| H6                  | Tyree Energy Technology | 100      |          |
| E8                  | Science & Engineering   | 258      |          |
| E10                 | Hilmer                  | 137      |          |

### Legend

|                   |                         |                   |                        |                    |                |
|-------------------|-------------------------|-------------------|------------------------|--------------------|----------------|
|                   |                         |                   |                        |                    |                |
| WiFi              | Charging Power Outlets  | Wheelchair Access | Group Work Space       | Microwaves         | Hot/Cold Water |
|                   |                         |                   |                        |                    |                |
| Quiet Study Space | Toilets                 | Writeable Boards  | Screens for Group Work | 24/7 Accessible    | Outdoor        |
|                   |                         |                   |                        |                    |                |
| Computers         | Device Charging Station | Media Booths      | Postgrad Study Space   | Silent Study Space |                |



C27 Wallace Wurth Study Space



E12 Business School Study Space



E15 Quadrangle Study Space



F8 Law Library Study Space



G14 Webster Courtyard Study Space